




ICM TECHNOLOGY (THAILAND) CO., LTD.

INNOVATIVE CONSTRUCTION MATERIALS

Breathable, Drying & Waterproof Buildings

World's 1st Functional Solution for Construction in South East Asia



 +66 83 819 6763
 www.icmtechglobal.com
 Bangkok, Thailand

Our Service :

CrystalKrete 
Neoblock 
Neoplast 
Elastic Stone 

ICM TECHNOLOGY

NEXT GENERATION FOUNDATION

- *Integral Waterproofing*
- *Self-Healing*
- *Chloride diffusion is reduced > 50% thereby prolongs service life of the structure*
- *Peace of Mind!*

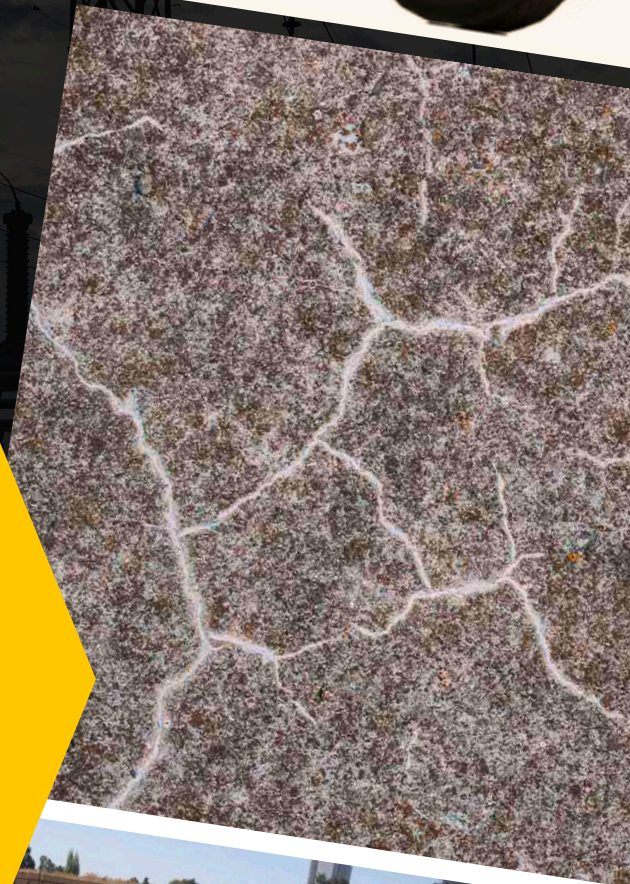
CRYSTAL KRETE™

A waterproof building foundation crucial for a structure's durability. It prevents water intrusion, protecting against mold and costly repairs. Investing in waterproofing safeguards property and enhances building integrity over time.

CONTACT US

☎ +66 83 819 6763

🌐 www.icmtechglobal.com



ICM TECHNOLOGY

NEXT GENERATION WALL CONSTRUCTION

- 10 Times higher strength than AAC/CLC & Clay Bricks
- 47% Superior Sound Insulation
- 10 Times lower Water Absorption
- 15-30% more Energy Savings (principles of passive cooling)

NEOBLOCK™

NEOBLOCK™ construction blocks are equipped with our proprietary interlock technology, 'Link N Lock,' which facilitates efficient installation without requiring labor skills.

CONTACT US

☎ +66 83 819 6763

🌐 www.icmtechglobal.com



ICM TECHNOLOGY

NEXT GENERATION PLASTERING

- 100% Waterproof
- 100% Drying
- 100% Breathable
- < 1mm water penetration

ECSTRA NEOPLAST™

ECSTRA™ by NEOPLAST™ is a drying, breathable system designed to replace traditional plaster. It features less than 1mm water penetration, integrating plastering and waterproofing into a single process, saving time and costs. Additionally, it offers 100% breathability.

CONTACT US

☎ +66 83 819 6763

🌐 www.icmtechglobal.com





ICM TECHNOLOGY

NEXT GENERATION STONE FACADE

- *Waterproof*
- *Preservation & Energy Efficient*
- *High Adhesion Force*
- *Frost and Fire Resistant*
- *Cost Effective*
- *30 Year Warranty!*

ELASTIC STONE™

Smart Elastic Stone™ A unique stone finishing material created with Patented Technology. Multi-layer material, face layer consists of natural stone marble. Easily bent to 180 degrees, allowing you to install it on angular or radial surfaces.

CONTACT US

☎ +66 83 819 6763

🌐 www.icmtechglobal.com



ICM TECHNOLOGY (THAILAND) CO., LTD.

INNOVATIVE CONSTRUCTION MATERIALS

Breathable, Drying & Waterproof Buildings

World's 1st Functional Solution for Construction in South East Asia



+66 83 819 6763



www.icmtechglobal.com



Bangkok, Thailand

